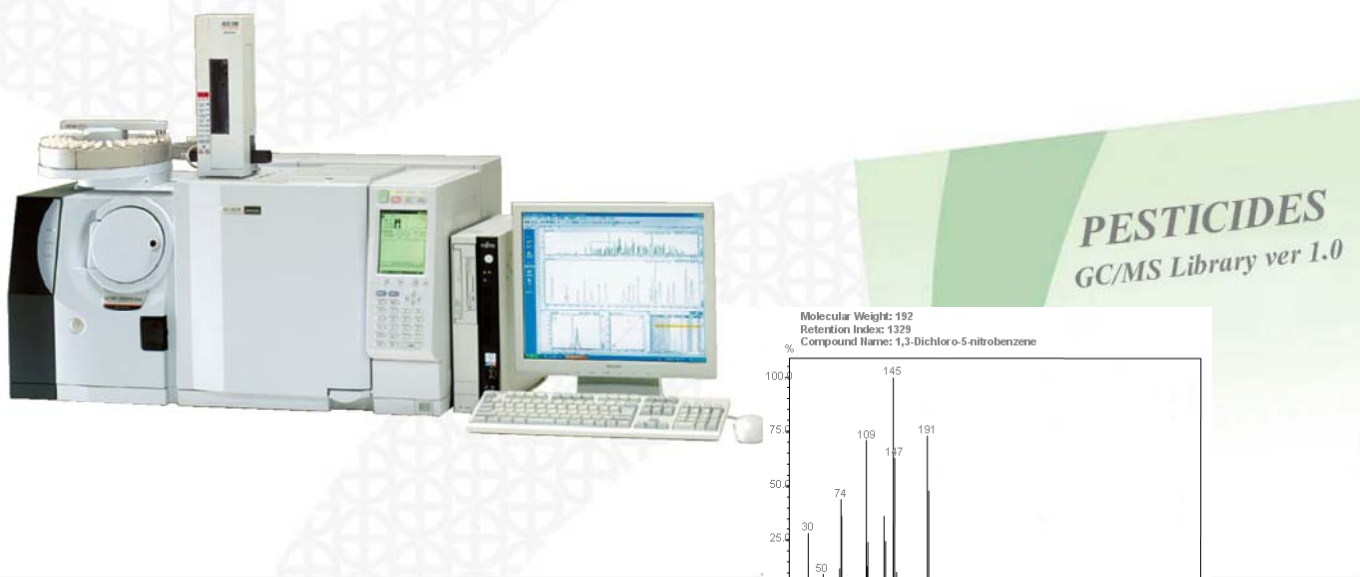


PESTICIDES GC/MS Library

For Shimadzu GCMS-QP2010 Series

For Food and Beverage Products
Powerful Backup to Identification of Pesticides residues



925 Pesticides Compounds:

Mass Spectra and Retention Indices Contained in Special Library

Through Linking with Similarity Search with Retention Index supported by GCMSsolution
Highly Reliable and Efficient Identification is Achieved for Pesticides Residues

Similarity Search with Retention Index

- The retention index is calculated automatically by GCMSsolution.
- Similarity search with retention index enables greater reliability of search results by matching retention indices with those of compounds contained within the mass spectral libraries.



Unequivocal Identification for Compounds with Similar Mass Spectra such as Isomers and Homologs.

PESTICIDES GC/MS

PESTICIDES GC/MS

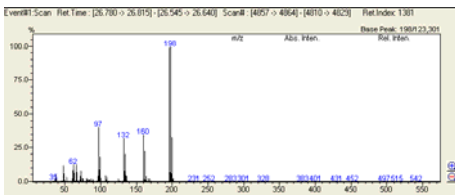
- The Pesticides GC/MS Library contains 925 pesticides and 33 saturated hydrocarbons (C7-40) spectra with retention indices. All the spectra, registered with official CAS information, have been acquired from the injection of pure chemicals. All the retention indices reported have been verified with data reported in the specific literature, and tested for repeatability. The compounds had been tested three times during a six months period.
- The mass spectra and retention indices registered in the Pesticides GC/MS Library were obtained using the Shimadzu GCMS-QP2010. * The Pesticides GC/MS Library was obtained by the Prof. Mondello group of the University of Messina in Italy. This was done using the SLB-5ms

Retention Index Search - Greater Assurance and Efficiency of Identification -

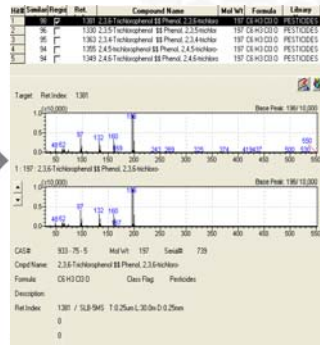
Target Spectrum

Retention Index **Automatic Calculation**
Retention Index : 1381

Until Now:
Similarity Search



PESTICIDES GC/MS Library : Similarity Search + Retention Index Search



Similarity 90 or more

Many hits, but Identification is difficult



Conventional library search, making use of solely spectral similarity, often indicates so many probable candidates for an unknown that it is hard to identify it, especially in the case that sample includes isomers and much matrix. GCMSsolution provides "similarity search with retention index", using retention indices registered in Pesticides GC/MS Library. This function makes it possible to perform more reliable and easier search even for complex samples. The results can be output as reports in electronic or hardcopy. *Pesticides GC/MS Library can be used for GCMSsolution Ver 2.4 or higher.



Similarity 90 or more +
Retention Index :
Tolerance Range : ± 10

Identification Is Easy!



Founded in 1875, Shimadzu Corporation, a leader in the development of advanced technologies, has a distinguished history of innovation built on the foundation of contributing to society through science and technology. We maintain a global network of sales, service, technical support and applications centers on six continents, and have established long-term relationships with a host of highly trained distributors located in over 100 countries. For information about Shimadzu, and to contact your local office, please visit our Web site at www.shimadzu.com



SHIMADZU EUROPA GmbH.
Albert-Hahn-Str. 6-10, 47269 Duisburg, Germany.
Phone: 0203-7687-0 Fax: 0203-766625
URL <http://www.shimadzu.eu>



JQA-0376